



[www.slingshotwholesale.com](http://www.slingshotwholesale.com)

PHONE: 304.375.2553

FAX: 304.375.2217

COMPANY: \_\_\_\_\_

CONTACT: \_\_\_\_\_

JOB NAME: \_\_\_\_\_

PHONE: \_\_\_\_\_

FAX: \_\_\_\_\_

E-MAIL: \_\_\_\_\_

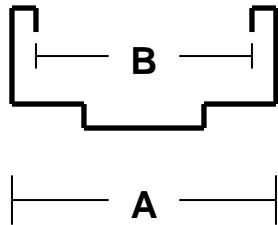
**Frame Application Guide**

Data Sheet: F10.3.2

3-2010

Drywall

<u>A</u>	<u>B</u>
5 5/8"	4 5/8"
5 7/8"	4 7/8"
6 1/4"	5 1/4"
7 1/4"	6 1/4"
7 3/4"	6 3/4"
8 1/4"	7 1/4"



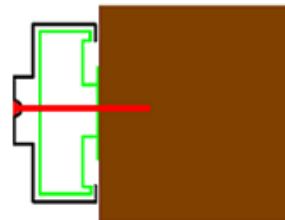
- FRAME MATERIAL
- DRYWALL
- ANCHOR
- STUD
- SCREW / BOLT
- BLOCK



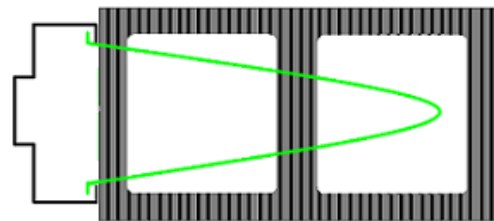
1 - Standard K.D. drywall frame assembly



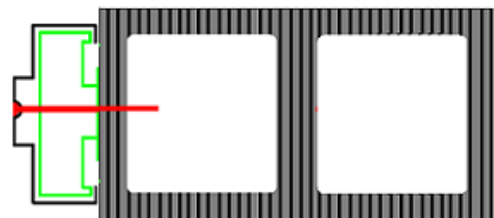
2 - Welded drywall frame assembly



3 - Butt against wood stud construction



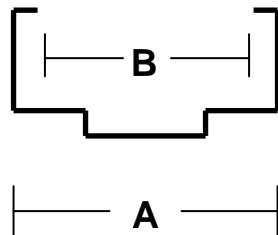
4 - Standard masonry assembly, new construction



5 - Existing masonry assembly

Masonry

<u>A</u>	<u>B</u>
5 3/4"	4 7/8"
6 3/4"	5 3/4"
7 3/4"	6 3/4"
8 3/4"	7 3/4"



\*Stock frame profiles listed above in 6'8", 7'0" & 8'0".  
Call for availability of any profile not listed above.